

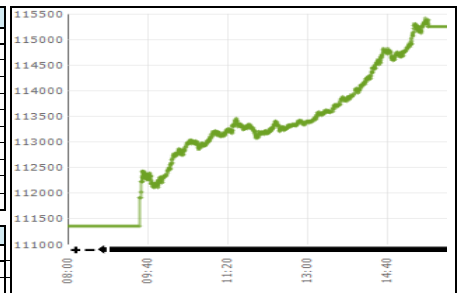


Daily Stock Market Report
30-Dec-24

Stock Market Summary

| KSE-100 | | |
|-----------------------------------|------------|------------|
| | 30-Dec-24 | 27-Dec-24 |
| Index | 115,259.00 | 111,351.18 |
| Change | 3,907.82 | 927.86 |
| Intra Day High | 115,422.34 | 112,043.77 |
| Intra Day Low | 111,916.71 | 110,246.93 |
| Index Band | 3,505.63 | 1,796.84 |
| Ready Turnover (Shares. In Mln) | 1,059.02 | 815.92 |
| Future Turnover (Shares. In Mln) | 198.00 | 631.20 |
| Market. Cap (Rs. In Bln) | 14558.81 | 14126.47 |
| Ready Traded Value (Rs. In Bln) | 40.89 | 32.92 |
| Future Traded Value (Rs. In Bln) | 9.01 | 26.38 |
| Open Interest Future (Rs. In Bln) | 33.13 | 48.33 |
| Gainers | 333 | 223 |
| Losers | 84 | 176 |
| Equal | 48 | 44 |

| Volume Leaders | | | |
|-------------------|-------------|------------|-------------|
| Name | Volume | Open Price | Close Price |
| Energyico PK | 125,613,935 | 6.52 | 7.44 |
| WorldCall Telecom | 111,551,930 | 1.71 | 1.83 |
| B.O Punjab | 84,182,656 | 9.48 | 10.47 |
| Silk Bank Ltd | 48,777,302 | 0.98 | 1.05 |
| K-Electric Ltd. | 45,320,218 | 5.23 | 5.41 |
| Pak Elektron | 36,348,761 | 40.53 | 44.52 |
| Sui South Gas | 30,315,237 | 47.08 | 49.52 |
| Fauji Foods Ltd | 29,105,477 | 17.08 | 17.26 |
| Telecard Limited | 26,616,811 | 8.63 | 9.63 |
| Pace (Pak) Ltd. | 24,901,250 | 7.01 | 7.33 |



| Intraday Circuit Breakers | | |
|---------------------------|-----------|-----------|
| | 30-Dec-24 | 27-Dec-24 |
| Upper | 45 | 26 |
| Lower | 7 | 13 |

Top 10 Index Drivers

| KSE - 100 | | | |
|-------------------|-----------|--------------|-------------|
| Name | Volume | Index Points | Close Price |
| Habib Bank | 7,671,167 | 296.07 | 171.50 |
| Dawood Hercules | 472,045 | 257.33 | 255.05 |
| MCB Bank Ltd | 995,328 | 250.83 | 287.32 |
| Engro Corporation | 2,569,139 | 231.90 | 451.90 |
| Mari Petroleum | 3,315,720 | 229.13 | 718.82 |
| Meezan Bank Ltd | 6,024,573 | 202.76 | 243.54 |
| Bank AL-Habib | 797,899 | 199.88 | 134.25 |
| Systems Limited | 316,179 | 187.81 | 616.48 |
| Pak Petroleum | 4,663,184 | 163.52 | 198.96 |
| P.S.O. | 3,799,376 | 117.67 | 444.62 |

Future Market

| Volume Leaders | | | |
|----------------|------------|------------|-------------|
| Name | Volume | Open Price | Close Price |
| BOP-JAN | 19,935,000 | 9.95 | 10.71 |
| CNERGY-JAN | 15,872,500 | 6.70 | 7.56 |
| SSGC-JAN | 15,683,500 | 49.30 | 50.47 |
| WTL-JAN | 15,682,500 | 1.80 | 1.88 |
| PAEL-JAN | 15,083,500 | 41.75 | 45.45 |
| FFL-JAN | 9,595,000 | 17.55 | 17.58 |
| PRL-JAN | 8,287,500 | 40.01 | 41.30 |
| TRG-JAN | 8,138,000 | 74.89 | 71.78 |
| KEL-JAN | 5,840,000 | 5.31 | 5.54 |
| PTC-JAN | 5,104,000 | 27.99 | 27.67 |

| Open Interest | | |
|---------------|------------|----------------------|
| Name | Volume | Value Rs. In Million |
| OGDC-JANB | 17,532,500 | 4,020.90 |
| TRG-JAN | 40,201,000 | 2,885.63 |
| PPL-JANB | 10,246,500 | 2,074.20 |
| AIRLINK-JAN | 8,332,500 | 1,842.98 |
| SAZEW-JANB | 1,440,000 | 1,651.31 |
| PAEL-JAN | 29,075,000 | 1,321.46 |
| PSO-JAN | 2,704,000 | 1,222.02 |
| SSGC-JAN | 20,279,000 | 1,023.48 |
| HUBC-JAN | 6,090,500 | 805.96 |
| ATRL-JAN | 1,051,500 | 748.43 |

Top 5 Gainers and Losers

| Gainers | | | |
|----------------------|--------|--------------|-------------|
| Name | Volume | Price Change | Close Price |
| Unilever Foods | 124 | 351.23 | 21,133.87 |
| Rafhan Maize | 274 | 92.12 | 8,980.56 |
| Hallmark Company Ltd | 2,128 | 77.50 | 852.49 |
| Bata (Pak) Ltd. | 2,331 | 50.87 | 1,914.37 |
| Pak Tobacco | 6,904 | 43.63 | 1,373.63 |

| Losers | | | |
|----------------------|--------|--------------|-------------|
| Name | Volume | Price Change | Close Price |
| Khyber Textile | 73 | -60.39 | 578.73 |
| PIA Holding CompanyB | 51 | -58.78 | 832.28 |
| Colgate Palm | 29,920 | -17.18 | 1,499.90 |
| Premier Sugar | 900 | -13.50 | 405.00 |
| Khairpur Sugar | 38 | -9.17 | 226.46 |

***Margin Trading System**
30-Dec-24

| MTS Trading Data | |
|--------------------------------------|---------------|
| Current Day Turnover (Shares in mln) | 0.00 |
| Current Day Value (Rs. in mln) | 0.00 |
| MTS open Position (Rs in mln) | 11,055.43 |
| MTS Release Position (Rs in mln) | 1,378.85 |
| MTS unrelease Position (Rs in mln) | 11,056.42 |
| Avg Rate | Not Available |

| Volume Leaders | | | |
|----------------|--------|----------------------|----------|
| Name | Volume | Value Rs. In Million | Avg Rate |
| - | - | - | - |
| - | - | - | - |
| - | - | - | - |
| - | - | - | - |
| - | - | - | - |

| Open Interest | | |
|---------------|------------|----------------------|
| Scrip | Volume | Value Rs. In Million |
| UBL | 3,463,338 | 1009.97 |
| PSO | 2,892,669 | 907.44 |
| AIRLINK | 4,462,286 | 770.53 |
| HUBC | 5,716,060 | 591.23 |
| PAEL | 17,111,136 | 535.37 |

International Commodity Prices

| Contract Name | Price | Change in Price USD |
|------------------------|----------|---------------------|
| Gold 100 OZ (USD/t oz) | 2,605.44 | -18.20 |
| COTTON (USD/lb) | 68.69 | 0.17 |
| WTI CRUDE (USD/bbl) | 71.40 | 0.79 |
| SILVER (USD/t oz) | 29.31 | -0.73 |

Daily Position of Special Convertible Rupee Accounts (USD in Mn)
December 06, 2024

| Inflow | Outflow | Net | Current Month Cumulative Net Flow | Total Yearly (July 2024 to-date) |
|--------|---------|-------|-----------------------------------|----------------------------------|
| 2.06 | 8.84 | -6.78 | -41.62 | 126.23 |

WORLD INDICES

| Index | Level | YTD Change |
|----------------------|------------|------------|
| KSE 100 | 115,259.00 | 84.56% |
| S&P BSE SENSEX INDEX | 77,943.96 | 7.89% |
| SET-THAILAND | 906.23 | 3.54% |
| SES All-S' PORE | 869.93 | 14.10% |
| FTSE Bursa MALAYSIA | 1,636.15 | 12.48% |
| DOW JONES | 42,573.73 | 12.96% |
| S&P 500 INDEX | 5,906.94 | 23.84% |
| INSDAG COMP | 19,486.79 | 29.81% |
| FTSE 100 INDEX | 8,121.01 | 5.01% |
| NIKKEI 225 | 39,894.54 | 19.22% |
| HANG SENG-HK | 20,100.26 | 17.91% |

Portfolio Investment
30-Dec-24

| Investors' Type | Gross Buy Rs. In Million | Gross Sell Rs. In Million | Net Buy/Sell Rs. In Million | USD in Million |
|----------------------------|--------------------------|---------------------------|-----------------------------|----------------|
| Foreigners | 3,447.74 | (3,626.28) | (178.54) | (0.64) |
| NBFC | 20.58 | (25.69) | (5.11) | (0.02) |
| Companies | 1,909.25 | (2,220.48) | (311.23) | (1.12) |
| Banks/DFI | 442.50 | (912.30) | (469.79) | (1.69) |
| Individuals | 36,746.57 | (37,235.23) | (488.65) | (1.76) |
| Mutual Funds | 3,023.77 | (1,143.33) | 1,880.45 | 6.76 |
| Others | 114.98 | (573.56) | (458.58) | (1.65) |
| INSURANCE COMPANIES | 163.63 | (254.86) | (91.22) | (0.33) |
| BROKER PROPRIETARY TRADING | 5,140.89 | (5,018.22) | 122.67 | 0.44 |

Exchange Rates (Interbank)
30-Dec-24

| | |
|--------------------|--------|
| US Dollar (PKR/\$) | 278.48 |
| UK Pound (PKR/£) | 349.96 |
| Euro (PKR/€) | 290.22 |

| Money Market Rates - Offer | |
|----------------------------|--------|
| KIBOR (Six Months) | 12.18% |

* MTS was not be available on Dec 30, 2024 due to bank holiday on Wednesday, January 01, 2025