

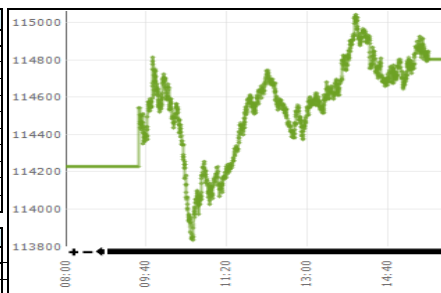


**Daily Stock Market Report**  
14-Jan-25

**Stock Market Summary**

| KSE-100                           |            |            |
|-----------------------------------|------------|------------|
|                                   | 14-Jan-25  | 13-Jan-25  |
| Index                             | 114,804.17 | 114,230.06 |
| Change                            | 574.11     | 982.77     |
| Intra Day High                    | 115,044.79 | 114,496.09 |
| Intra Day Low                     | 113,836.61 | 113,083.86 |
| Index Band                        | 1,208.18   | 1,412.23   |
| Ready Turnover (Shares. In Mln)   | 589.46     | 521.21     |
| Future Turnover (Shares. In Mln)  | 126.79     | 131.21     |
| Market. Cap (Rs. In Bln)          | 14222.67   | 14362.16   |
| Ready Traded Value (Rs. In Bln)   | 32.58      | 28.29      |
| Future Traded Value (Rs. In Bln)  | 8.67       | 7.65       |
| Open Interest Future (Rs. In Bln) | 35.86      | 34.87      |
| Gainers                           | 269        | 280        |
| Losers                            | 137        | 116        |
| Equal                             | 57         | 53         |

| Volume Leaders     |            |            |             |
|--------------------|------------|------------|-------------|
| Name               | Volume     | Open Price | Close Price |
| Energyco PK        | 42,527,928 | 6.95       | 7.21        |
| Pak Refinery       | 38,066,803 | 38.76      | 41.50       |
| K-Electric Ltd.    | 33,447,471 | 4.88       | 5.00        |
| WorldCall Telecom  | 29,525,333 | 1.78       | 1.78        |
| Sui South Gas      | 26,679,632 | 43.76      | 43.87       |
| Hascol Petrol      | 26,398,810 | 11.38      | 12.52       |
| Telecard Limited   | 19,836,175 | 9.12       | 9.54        |
| Pak Stock Exchange | 16,136,998 | 28.38      | 30.43       |
| Fauji Foods Ltd    | 15,314,743 | 17.66      | 17.42       |
| B.O.Punjab         | 14,469,918 | 10.27      | 10.49       |



| Intraday Circuit Breakers |           |           |
|---------------------------|-----------|-----------|
|                           | 14-Jan-25 | 13-Jan-25 |
| Upper                     | 34        | 26        |
| Lower                     | 10        | 11        |

**Top 10 Index Drivers**

| KSE - 100          |            |              |             |
|--------------------|------------|--------------|-------------|
| Name               | Volume     | Index Points | Close Price |
| United Bank        | 2,510,435  | 196.27       | 388.29      |
| Mari Petroleum     | 1,281,730  | 83.25        | 706.63      |
| Systems Limited    | 227,967    | 72.75        | 575.48      |
| Attock Refinery    | 2,353,092  | 69.99        | 669.74      |
| P.S.O              | 3,313,086  | 63.87        | 402.75      |
| GlaxoSmithKline    | 336,837    | 45.76        | 387.95      |
| Lucky Cement       | 150,508    | 35.66        | 1,116.52    |
| Pak Stock Exchange | 16,136,998 | 31.94        | 30.43       |
| Abbott Lab.        | 6,605      | 31.26        | 1,251.74    |
| Fatima Fert        | 530,217    | 26.03        | 82.09       |

| Volume Leaders |            |            |             |
|----------------|------------|------------|-------------|
| Name           | Volume     | Open Price | Close Price |
| PRL-JAN        | 15,482,500 | 38.95      | 41.87       |
| SSGC-JAN       | 12,770,000 | 44.98      | 44.29       |
| CENERGY-JAN    | 8,253,500  | 7.10       | 7.29        |
| TRG-JAN        | 6,359,000  | 64.80      | 66.80       |
| PAEL-JAN       | 5,566,500  | 43.27      | 43.17       |
| BOP-JAN        | 5,564,500  | 10.41      | 10.59       |
| MILCF-JAN      | 5,220,000  | 44.31      | 44.97       |
| KEL-JAN        | 4,710,000  | 5.01       | 5.03        |
| TELE-JAN       | 4,557,500  | 9.21       | 9.62        |
| KOSM-JAN       | 3,906,000  | 6.81       | 7.08        |

| Open Interest |            |                      |
|---------------|------------|----------------------|
| Name          | Volume     | Value Rs. In Million |
| OGDC-JANB     | 17,083,000 | 3,831.89             |
| TRG-JAN       | 39,828,000 | 2,660.51             |
| PPL-JANB      | 10,983,500 | 2,133.54             |
| AIRLINK-JAN   | 9,045,000  | 1,825.46             |
| SAZEW-JANB    | 1,459,500  | 1,618.09             |
| PSO-JAN       | 3,246,000  | 1,317.71             |
| PAEL-JAN      | 29,029,500 | 1,253.20             |
| SSGC-JAN      | 22,810,500 | 1,010.28             |
| DGKC-JAN      | 8,949,000  | 932.75               |
| HUBC-JAN      | 7,028,000  | 906.19               |

**Top 5 Gainers and Losers**

| Gainers              |           |              |             |
|----------------------|-----------|--------------|-------------|
| Name                 | Volume    | Price Change | Close Price |
| Hallmark Company Ltd | 814       | 84.54        | 950.05      |
| Philip Morris Pak.   | 5,580     | 70.90        | 789.76      |
| Attock Refinery      | 2,353,092 | 50.65        | 669.74      |
| Unilever Foods       | 58        | 50.00        | 21,450.00   |
| Abbott Lab.          | 6,605     | 45.72        | 1,251.74    |

| Losers          |        |              |             |
|-----------------|--------|--------------|-------------|
| Name            | Volume | Price Change | Close Price |
| Nestle Pakistan | 117    | -58.04       | 7,435.93    |
| Pak Engineering | 1,873  | -56.55       | 600.01      |
| Ismail Ind-     | 202    | -50.00       | 1,900.00    |
| Rafhan Maize    | 122    | -32.61       | 9,017.39    |
| J.D.W.Sugar     | 3,741  | -22.96       | 890.13      |

**Margin Trading System**  
14-Jan-25

| MTS Trading Data                     |           |
|--------------------------------------|-----------|
| Current Day Turnover (Shares in mln) | 16.44     |
| Current Day Value (Rs. in mln)       | 1,094.36  |
| MTS open Position (Rs in mln)        | 11,836.75 |
| MTS Release Position (Rs in mln)     | 845.04    |
| MTS unrelease Position (Rs in mln)   | 10,739.84 |
| Avg Rate                             | 19%       |

| Volume Leaders |           |                      |          |
|----------------|-----------|----------------------|----------|
| Name           | Volume    | Value Rs. In Million | Avg Rate |
| PRL            | 2,324,756 | 81.90                | 21%      |
| FCCL           | 1,409,735 | 41.58                | 19%      |
| BOP            | 1,407,750 | 12.49                | 18%      |
| CENERGY        | 1,222,549 | 7.46                 | 20%      |
| KEL            | 1,040,663 | 4.43                 | 19%      |

| Open Interest |           |                      |
|---------------|-----------|----------------------|
| Scrip         | Volume    | Value Rs. In Million |
| UBL           | 4,010,344 | 1227.98              |
| AIRLINK       | 5,786,714 | 939.61               |
| PSO           | 2,534,785 | 805.58               |
| FFC           | 2,141,164 | 687.50               |
| HBL           | 4,460,657 | 637.45               |

**International Commodity Prices**

| Contract Name          | Price    | Change in Price USD |
|------------------------|----------|---------------------|
| Gold 100 OZ (USD/t oz) | 2,675.74 | 6.26                |
| COTTON (USD/lb)        | 67.42    | -0.55               |
| WTI CRUDE (USD/bbl)    | 77.57    | -1.09               |
| SILVER (USD/t oz)      | 30.46    | 0.16                |

**Daily Position of Special Convertible Rupee Accounts (USD in Mn)**  
December 20, 2024

| Inflow | Outflow | Net   | Current Month Cumulative Net Flow | Total Yearly (July 2024 to-date) |
|--------|---------|-------|-----------------------------------|----------------------------------|
| 1.08   | 4.29    | -3.21 | -87.28                            | 80.57                            |

**WORLD INDICES**

| Index                | Level      | YTD Change |
|----------------------|------------|------------|
| KSE 100              | 114,804.17 | -0.28%     |
| S&P BSE SENSEX INDEX | 76,734.69  | -1.76%     |
| SET-THAILAND         | 872.42     | -3.73%     |
| SES All-S' PORE      | 864.53     | -0.59%     |
| FTSE Bursa MALAYSIA  | 1,564.75   | -4.72%     |
| DOW JONES            | 42,518.28  | -0.06%     |
| S&P 500 INDEX        | 5,842.91   | -0.66%     |
| NASDAQ COMP          | 19,044.39  | -1.38%     |
| FTSE 100 INDEX       | 8,201.54   | 0.35%      |
| NIKKEI 225           | 38,494.22  | -3.51%     |
| HANG SENG-HK         | 19,259.13  | -3.99%     |

**Portfolio Investment**  
14-Jan-25

| Investors' Type            | Gross Buy Rs. In Million | Gross Sell Rs. In Million | Net Buy/Sell Rs. In Million | USD in Million |
|----------------------------|--------------------------|---------------------------|-----------------------------|----------------|
| Foreigners                 | 2,342.25                 | (2,996.94)                | (654.69)                    | (2.35)         |
| NBFC                       | 64.79                    | (155.89)                  | (91.09)                     | (0.33)         |
| Companies                  | 1,427.56                 | (867.55)                  | 560.02                      | 2.01           |
| Banks/DFI                  | 329.09                   | (806.17)                  | (477.08)                    | (1.71)         |
| Individuals                | 31,277.40                | (30,666.99)               | 610.41                      | 2.19           |
| Mutual Funds               | 1,329.89                 | (1,350.79)                | (20.90)                     | (0.07)         |
| Others                     | 143.89                   | (630.30)                  | (486.41)                    | (1.74)         |
| INSURANCE COMPANIES        | 418.93                   | (428.96)                  | (10.03)                     | (0.04)         |
| BROKER PROPRIETARY TRADING | 4,483.74                 | (3,913.95)                | 569.79                      | 2.04           |

**Exchange Rates (Interbank)**  
14-Jan-25

|                    |        |
|--------------------|--------|
| US Dollar (PKR/\$) | 278.72 |
| UK Pound (PKR/£)   | 340.19 |
| Euro (PKR/€)       | 285.70 |

Data Source:  
Pakistan Stock Exchange  
State Bank of Pakistan  
National Clearing Company of Pakistan Limited  
www.bloomberg.com