

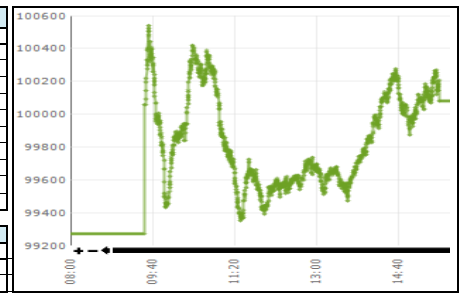


Daily Stock Market Report
28-Nov-24

Stock Market Summary

KSE-100		
	28-Nov-24	27-Nov-24
Index	100,082.77	99,269.25
Change	813.52	4,695.09
Intra Day High	100,540.29	99,549.81
Intra Day Low	99,354.24	97,188.28
Index Band	1,186.05	2,361.53
Ready Turnover (Shares. In Mln)	1,164.79	1,057.10
Future Turnover (Shares. In Mln)	454.44	438.25
Market. Cap (Rs. In Bln)	12716.20	12577.64
Ready Traded Value (Rs. In Bln)	39.78	39.56
Future Traded Value (Rs. In Bln)	18.78	15.85
Open Interest Future (Rs. In Bln)	32.19	29.10
Gainers	290	356
Losers	118	52
Equal	44	45

Volume Leaders			
Name	Volume	Open Price	Close Price
B.O.Punjab	179,225,089	7.85	8.85
K-Electric Ltd.	64,868,271	5.15	5.40
Bank Makramah	60,297,878	2.68	2.73
Pace (Pak) Ltd.	55,350,909	6.34	6.65
Hascol Petrol	42,730,290	12.59	11.92
Fauji Foods Ltd	38,903,524	12.82	12.74
Sui South Gas	36,014,321	24.88	25.73
Cnergyco PK	33,477,996	4.66	4.69
WorldCall Telecom	31,208,624	1.35	1.37
P.T.C.L.	27,953,239	17.70	19.47



Intraday Circuit Breakers		
	28-Nov-24	27-Nov-24
Upper	34	42
Lower	9	11

Top 10 Index Drivers

KSE - 100			
Name	Volume	Index Points	Close Price
Pak Petroleum	13,297,913	243.37	163.85
Habib Bank	9,935,745	142.99	177.44
Oil & Gas Dev	11,210,333	112.03	193.62
Lucky Cement	215,710	68.62	1,019.67
TRG Pak Ltd	20,730,048	61.69	61.00
Pioneer Cement	1,668,857	60.84	206.63
Systems Limited	708,547	55.09	554.39
B.O.Punjab	179,225,089	45.02	8.85
Cherat Cement	430,767	43.75	282.67
Fauji Cement	26,132,552	41.39	34.90

Future Market

Volume Leaders			
Name	Volume	Open Price	Close Price
BOP-DEC	26,851,000	8.59	8.94
PACE-DEC	21,666,000	6.60	6.79
TRG-DEC	21,549,500	57.80	61.95
WTL-DEC	17,853,000	1.38	1.39
SSGC-DEC	16,439,000	25.80	26.05
FFL-DEC	16,301,000	13.15	12.94
TRG-NOV	16,094,500	56.44	61.01
WTL-NOV	14,078,500	1.36	1.37
BOP-NOV	13,659,500	8.49	8.83
KOSM-NOV	11,282,000	7.72	7.74

Open Interest		
Name	Volume	Value Rs. In Million
OGDC-DECB	9,992,000	1,958.53
TRG-DEC	30,511,000	1,890.16
OGDC-NOVC	8,569,000	1,659.99
PPL-DECB	9,000,500	1,491.02
SAZEV-DECB	1,324,500	1,344.06
TRG-NOV	14,839,500	905.36
PPL-NOVC	5,260,500	859.99
UNITY-DEC	20,525,500	602.42
SAZEV-NOVC	601,000	601.72
AIRLINK-DEC	4,350,500	589.97

Top 5 Gainers and Losers

Gainers			
Name	Volume	Price Change	Close Price
Unilever Foods	51	126.71	19,494.84
Service Ind.Ltd	19,132	51.21	1,226.69
Mehmood Tex.	129	49.50	600.00
Packages Ltd.	72,146	35.79	590.05
Abbott Lab.	196,673	28.82	1,021.33

Losers			
Name	Volume	Price Change	Close Price
Ralhan Maize	12	-110.75	7,878.00
PIA Holding CompanyB	79	-21.70	880.58
Nestle PakistanXD	878	-16.62	6,583.87
Siemens Pak.	2,409	-13.72	1,505.28
United Bank	2,157,257	-12.25	335.52

Margin Trading System
28-Nov-24

MTS Trading Data	
Current Day Turnover (Shares in mln)	42.79
Current Day Value (Rs. in mln)	1,413.96
MTS open Position (Rs in mln)	8,933.18
MTS Release Position (Rs in mln)	1,053.06
MTS unrelease Position (Rs in mln)	7,520.75
Avg Rate	19%

Volume Leaders			
Name	Volume	Value Rs. In Million	Avg Rate
BOP	12,419,433	93.41	19%
KEL	8,267,750	37.69	21%
ENERGY	3,284,960	13.04	21%
FCCL	2,112,620	62.53	19%
MLCF	1,863,831	64.93	20%

Open Interest			
Scrip	Volume	Value Rs. In Million	
OGDC	8,662,366	1,307.30	
PSO	3,961,074	884.29	
HUBC	6,364,927	571.21	
NBP	9,110,210	518.08	
UBL	1,776,298	510.01	

International Commodity Prices

Contract Name	Price	Change in Price USD
Gold 100 OZ (USD/t oz)	2,660.54	30.29
COTTON (USD/lb)	71.75	0.00
WTI CRUDE (USD/bbl)	69.18	0.58
SILVER (USD/t oz)	31.14	0.90

Daily Position of Special Convertible Rupee Accounts (USD in Mn)
November 15, 2024

Inflow	Outflow	Net	Current Month Cumulative Net Flow	Total Yearly (July 2024 to-date)
0.88	10.64	-9.76	-48.22	193.53

WORLD INDICES

Index	Level	YTD Change
KSE 100	100,082.77	60.26%
S&P BSE SENSEX INDEX	79,234.94	9.68%
SET-THAILAND	919.74	5.08%
SES All-S PORE	855.28	12.18%
FTSE Bursa MALAYSIA	1,596.87	9.78%
DOW JONES	44,722.06	18.66%
S&P 500 INDEX	5,998.74	25.76%
INSDAQ COMP	19,060.48	26.97%
FTSE 100 INDEX	8,281.22	7.09%
NIKKEI 225	36,190.52	14.12%
HANG SENG-HK	19,575.26	14.83%

Portfolio Investment
28-Nov-24

Investors' Type	Gross Buy Rs. In Million	Gross Sell Rs. In Million	Net Buy/Sell Rs. In Million	USD in Million
Foreigners	3,279.03	(4,677.31)	(1,398.28)	(5.03)
NBFC	19.25	(24.81)	(5.56)	(0.02)
Companies	1,865.17	(1,933.32)	(68.15)	(0.25)
Banks/DFI	1,598.05	(1,014.31)	583.74	2.10
Individuals	40,826.90	(42,080.71)	(1,253.81)	(4.51)
Mutual Funds	3,206.96	(1,363.39)	1,843.57	6.63
Others	238.41	(371.67)	(133.26)	(0.48)
INSURANCE COMPANIES	528.98	(455.93)	73.05	0.26
BROKER PROPRIETARY TRADING	7,919.83	(7,561.13)	358.70	1.29

Exchange Rates (Interbank)
28-Nov-24

US Dollar (PKR/\$)	278.04
UK Pound (PKR/£)	351.74
Euro (PKR/€)	292.82

Data Source:
Pakistan Stock Exchange
State Bank of Pakistan
National Clearing Company of Pakistan Limited
www.bloomberg.com